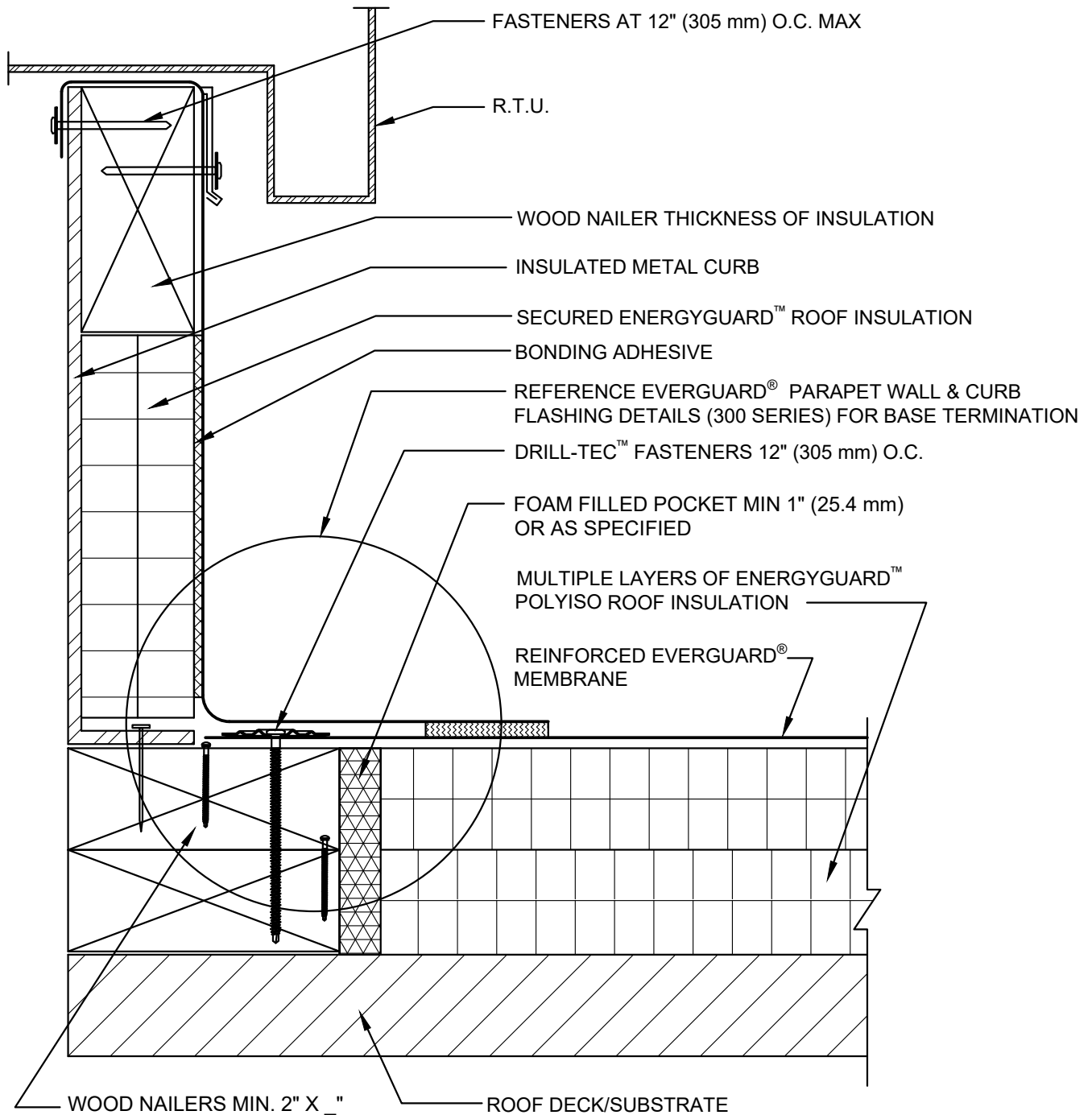





SINGLE-PLY: TPO & PVC 60-80 mil membranes



NOTE:

1. FOR STEEL ROOF DECKS: FILL STEEL DECK FLUTES WITH CLOSED CELL SPRAY FOAM INSULATION PRIOR TO THE INSTALLATION OF ABOVE DECK INSULATION A MINIMUM OF 12 INCHES (305 mm) FROM FACE OF OPENING.

GAF	TERMINATION AT R.T.U. DETAIL WITH WELDED LAP			LEGEND	
	DRAWING # 503C	THIS DETAIL APPLIES TO: ADHERED SYSTEMS MECHANICALLY ATTACHED SYSTEMS RHINOBOND® SYSTEMS	ISSUE / REVISION DATE 7/28/2023	SCALE N.T.S.	 CLOSED CELL FOAM INSULATION  HEAT-WELDED  BONDING ADHESIVE