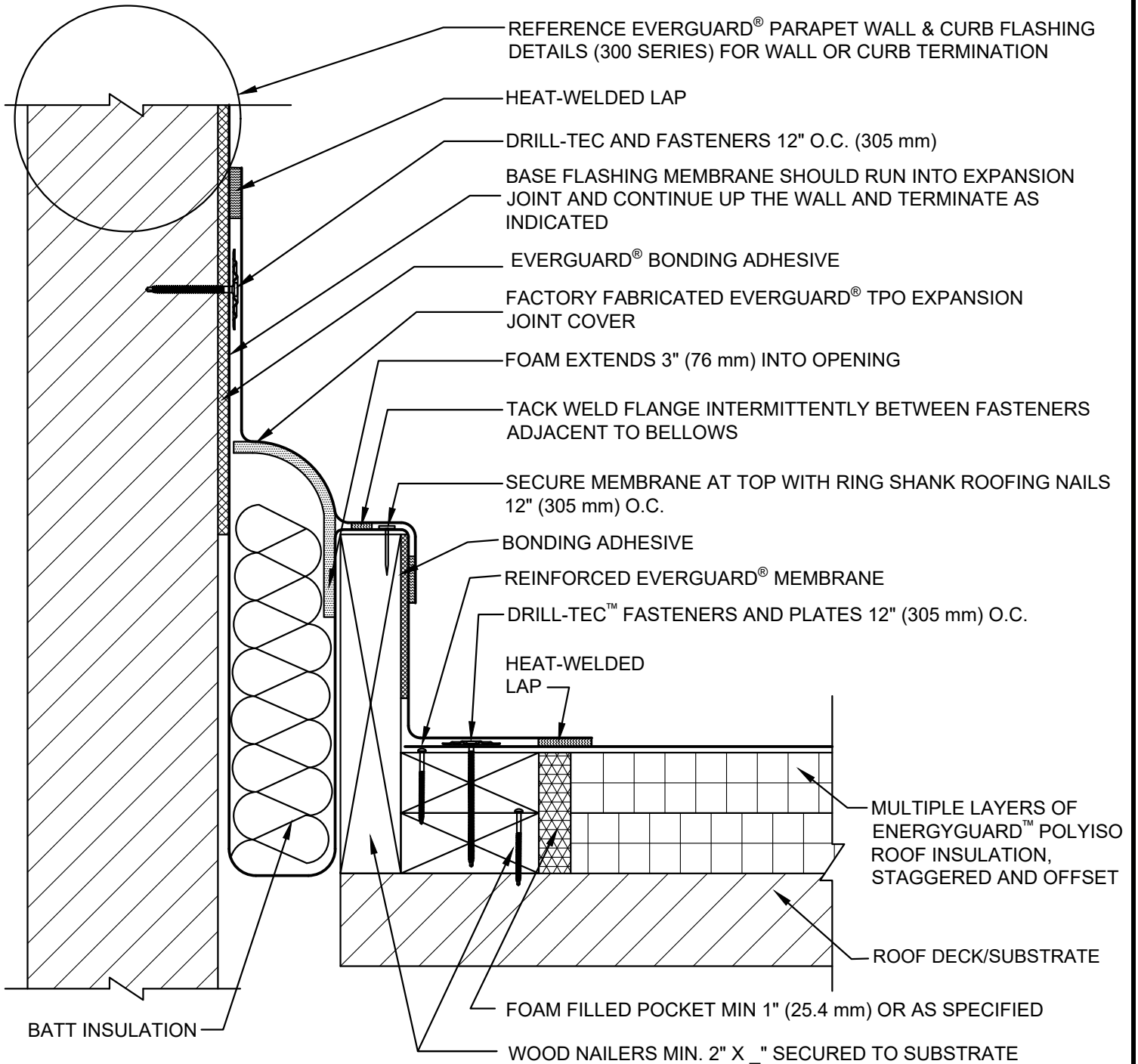


SINGLE-PLY: TPO 60-80 mil membranes



**NOTE:**

1. FOR STEEL ROOF DECKS: FILL STEEL DECK FLUTES WITH CLOSED CELL SPRAY FOAM INSULATION PRIOR TO THE INSTALLATION OF ABOVE DECK INSULATION A MINIMUM OF 12 INCHES (305 mm) FROM FACE OF WALL



**FACTORY FABRICATED WALL EXPANSION JOINT - CURB TYPE**

DRAWING #  
**404D**

THIS DETAIL APPLIES TO:  
ADHERED SYSTEMS  
MECHANICALLY ATTACHED SYSTEMS  
RHINOBOND® SYSTEMS

ISSUE / REVISION DATE  
**7/28/2023**

SCALE  
N.T.S.

**LEGEND**

- HEAT-WELDED
- EVERGUARD® BONDING ADHESIVE
- CLOSED CELL FOAM INSULATION