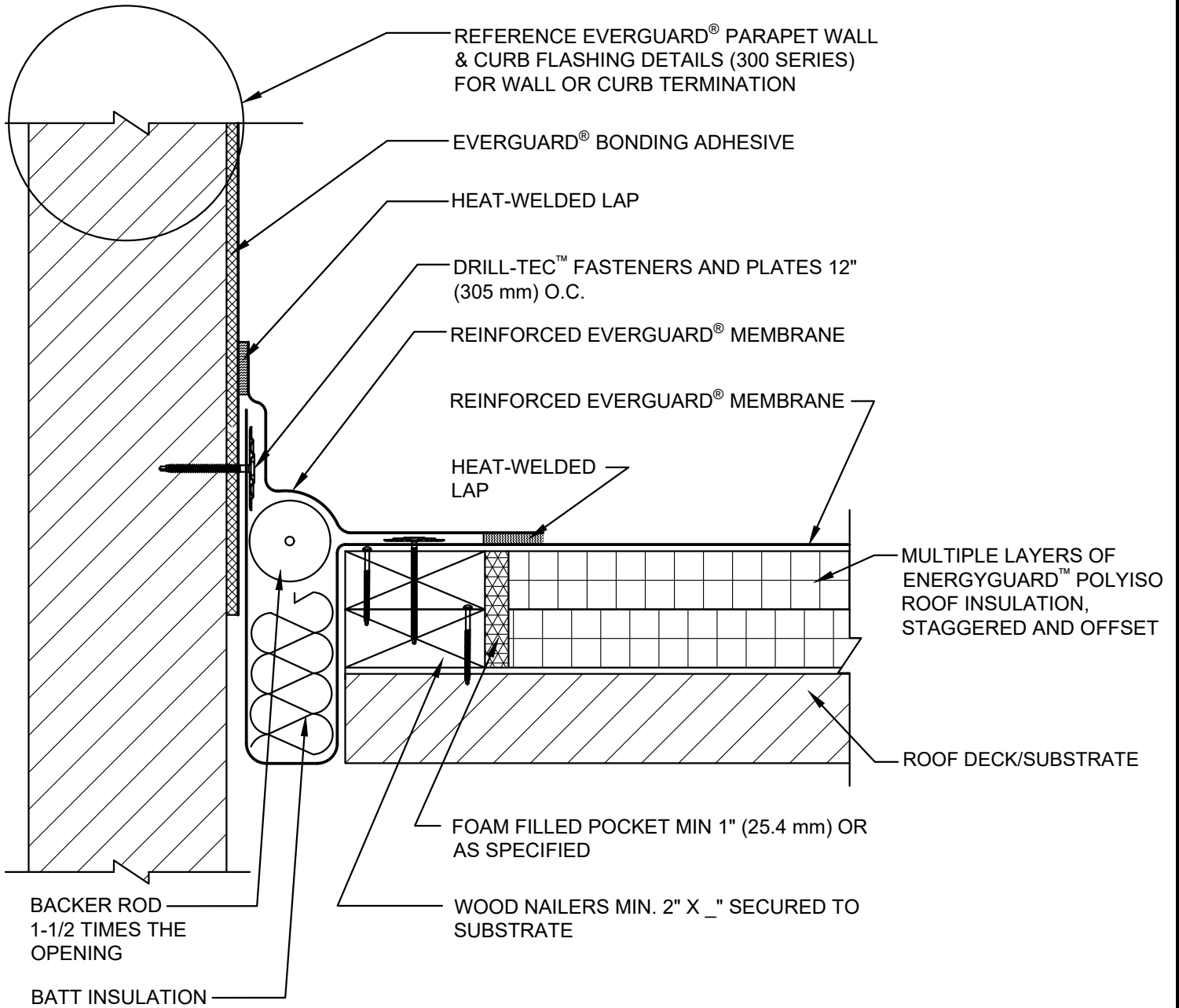


SINGLE-PLY: TPO & PVC 60-80 mil membranes



**NOTE:**

1. FIELD-FABRICATED EXPANSION JOINT SHOULD USE A SMOOTH BACKED MEMBRANE.
2. FOR STEEL ROOF DECKS: FILL STEEL DECK FLUTES WITH CLOSED CELL SPRAY FOAM INSULATION PRIOR TO THE INSTALLATION OF ABOVE DECK INSULATION A MINIMUM OF 12 INCHES (305 mm) FROM FACE OF WALL



FIELD FABRICATED WALL EXPANSION JOINT - FLAT TYPE

DRAWING #  
**403D**

THIS DETAIL APPLIES TO:  
ADHERED SYSTEMS  
MECHANICALLY ATTACHED SYSTEMS  
RHINOBOND® SYSTEMS

ISSUE / REVISION DATE  
**7/28/2023**

SCALE  
N.T.S.

**LEGEND**

-  HEAT-WELDED
-  EVERGUARD® BONDING ADHESIVE
-  CLOSED CELL FOAM INSULATION