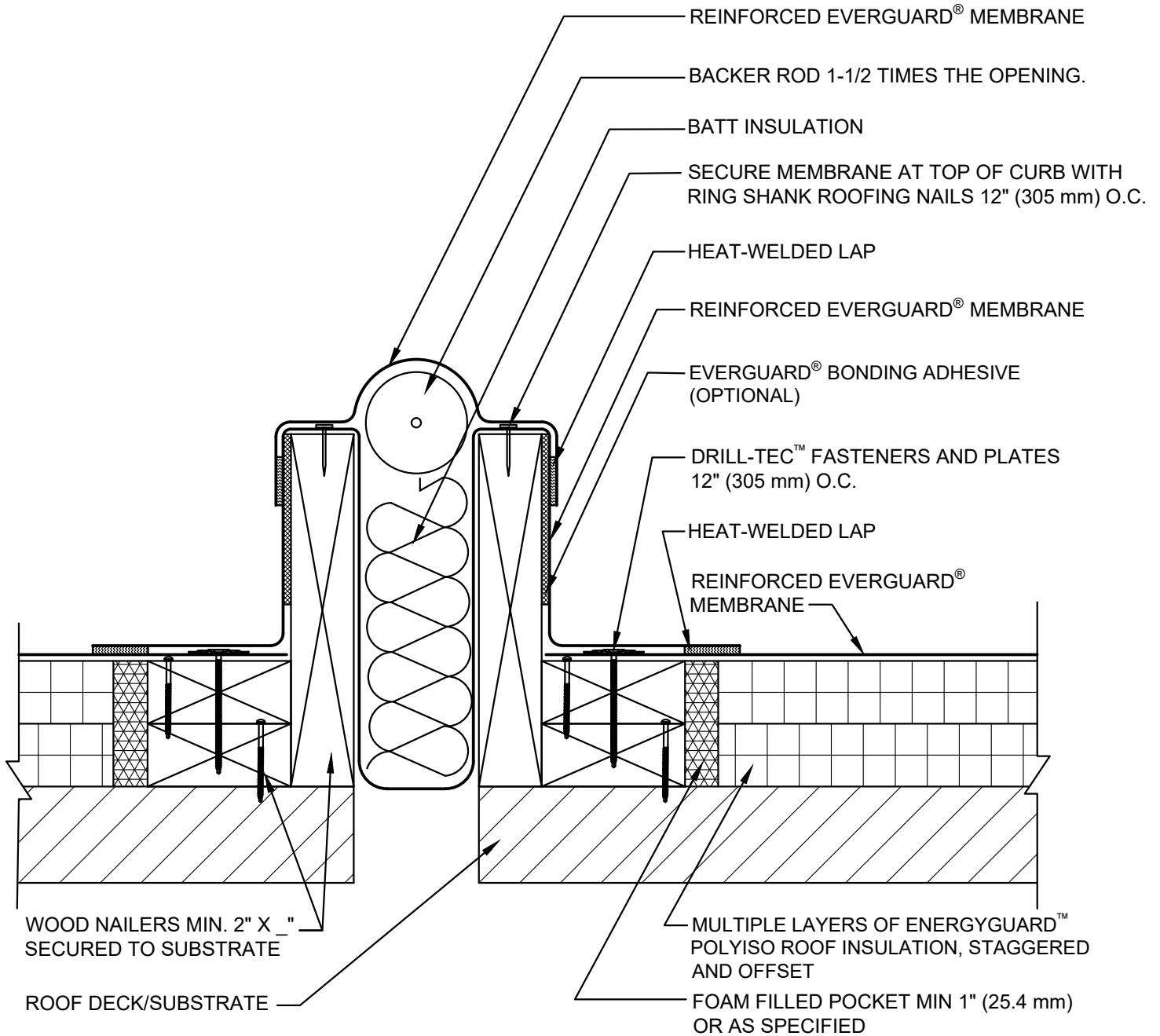






SINGLE-PLY: TPO & PVC 60-80 mil membranes



NOTE:

1. FIELD FABRICATED EXPANSION JOINT SHOULD BE SMOOTH BACKED MEMBRANE ONLY.
2. FOR STEEL ROOF DECKS: FILL STEEL DECK FLUTES WITH CLOSED CELL SPRAY FOAM INSULATION PRIOR TO THE INSTALLATION OF ABOVE DECK INSULATION A MINIMUM OF 12 INCHES (305 mm) FROM EDGE OF EXPANSION JOINT.

GAF	FIELD FABRICATED EXPANSION JOINT - CURB TYPE			LEGEND	
	DRAWING # 402D	THIS DETAIL APPLIES TO: ADHERED SYSTEMS MECHANICALLY ATTACHED SYSTEMS RHINOBOND® SYSTEMS	ISSUE / REVISION DATE 7/28/2023	SCALE N.T.S.	 HEAT-WELDED  EVERGUARD® WATER BLOCK  EVERGUARD® BONDING ADHESIVE  CLOSED CELL FOAM INSULATION