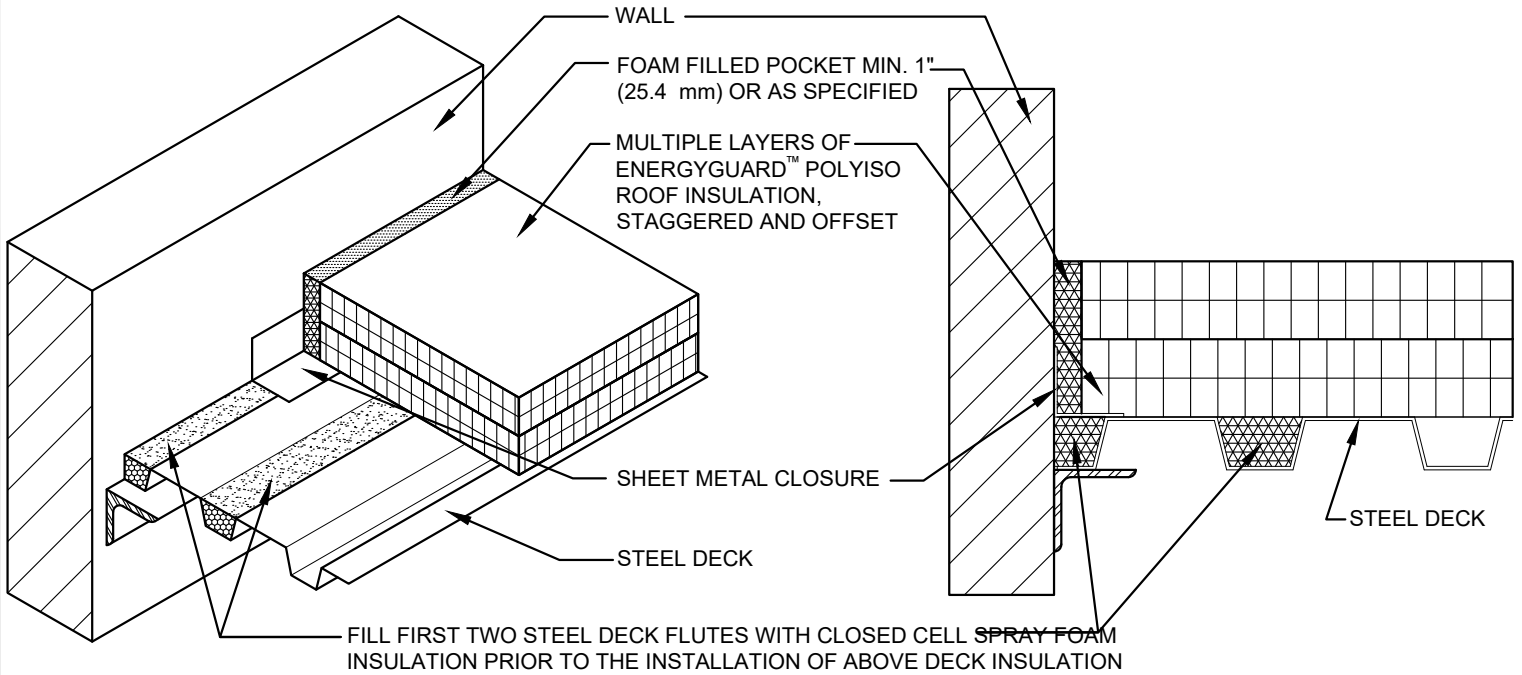
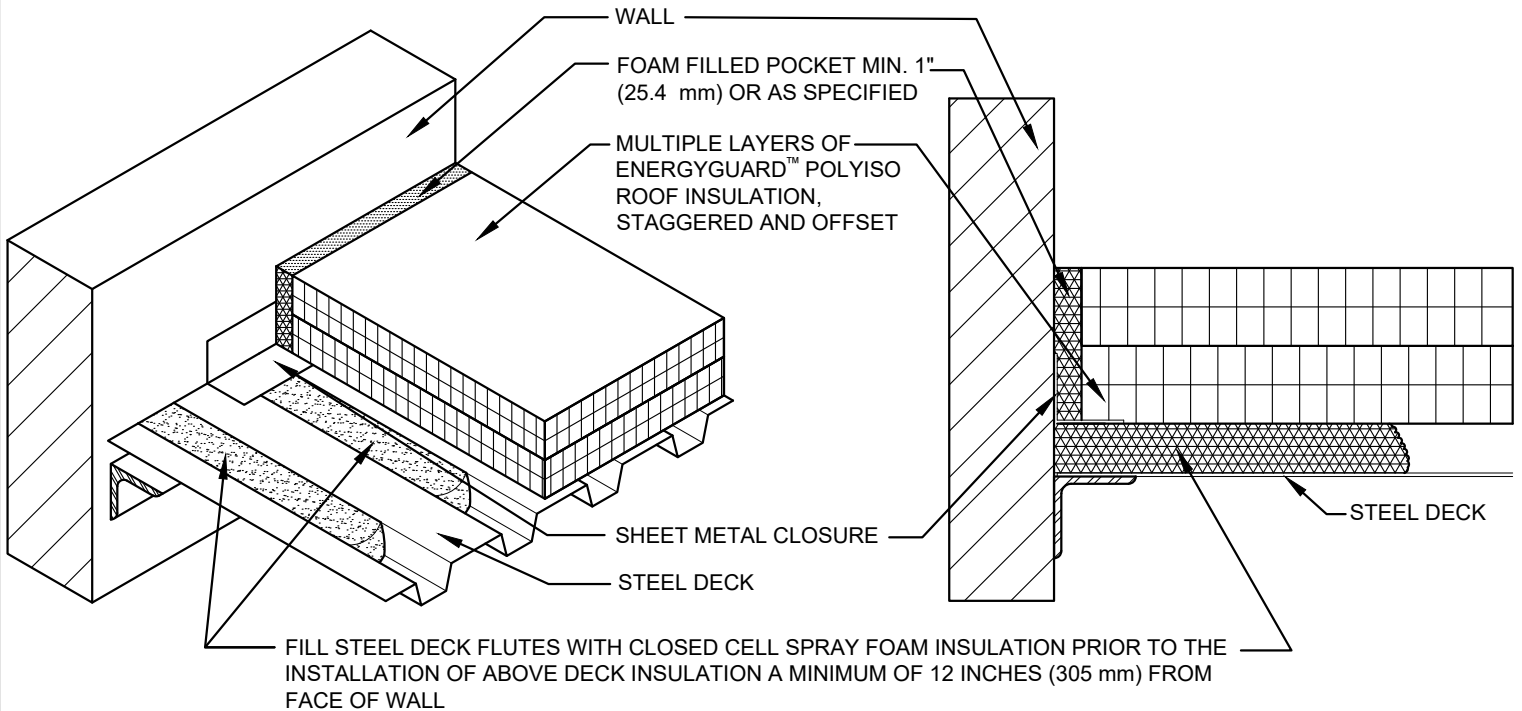


SINGLE-PLY: TPO & PVC 60-80 mil membranes



**STEEL DECK PARALLEL TO WALL**



**STEEL DECK PERPENDICULAR TO WALL**



**AIR SEAL DETAIL AT STEEL DECK TO WALL INTERFACE**

DRAWING #  
**350**

THIS DETAIL APPLIES TO:  
ADHERED SYSTEMS  
MECHANICALLY ATTACHED SYSTEMS  
RHINO BOND® SYSTEMS

ISSUE / REVISION DATE  
**7/28/2023**

SCALE  
N.T.S.

**LEGEND**

- HEAT-WELDED
- EVERGUARD® WATER BLOCK
- EVERGUARD® BONDING ADHESIVE
- CLOSED CELL FOAM INSULATION