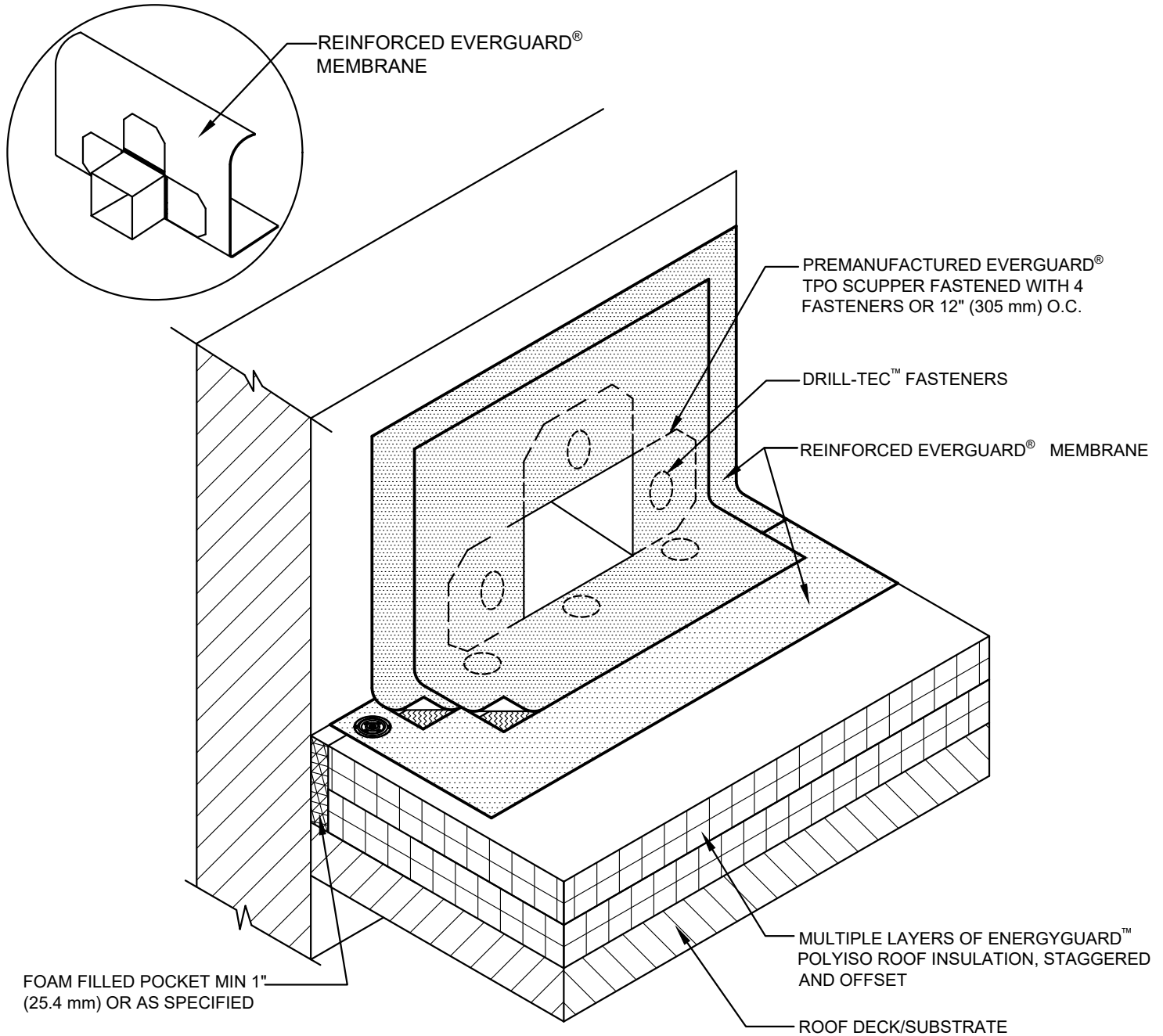




SINGLE-PLY: TPO & PVC 60-80 mil membranes

REAR VIEW OF SCUPPER



NOTE:

1. SCUPPER MUST ALSO BE SEALED ON OUTSIDE WALL.
2. STEEL ROOF DECKS: FILL STEEL DECK FLUTES WITH CLOSED CELL SPRAY FOAM INSULATION PRIOR TO THE INSTALLATION OF ABOVE DECK INSULATION A MINIMUM OF 12 INCHES (305 mm) FROM FACE OF WALL.

GAF	THROUGH WALL SCUPPER - PREFABRICATED DETAIL			LEGEND	
	DRAWING # 324D	THIS DETAIL APPLIES TO: ADHERED SYSTEMS MECHANICALLY ATTACHED SYSTEMS RHINO-BOND® SYSTEMS	ISSUE / REVISION DATE 7/28/2023	SCALE N.T.S.	 HEAT-WELDED  CLOSED CELL FOAM INSULATION