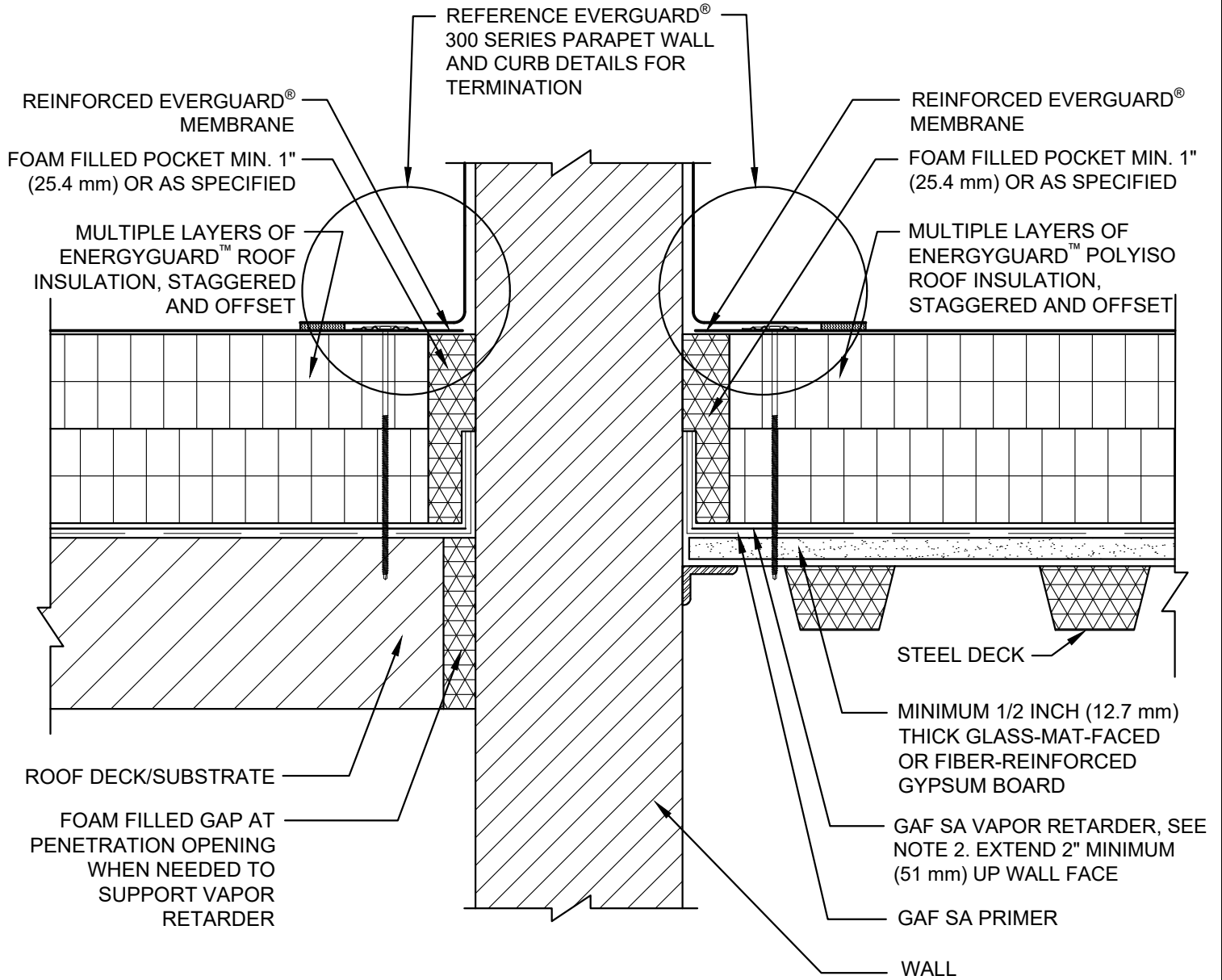



SINGLE-PLY: TPO & PVC 45-80 mil membranes



**NOTE:**

1. USE DETAIL IN CONJUNCTION WITH THE STANDARD TERMINATION DETAIL FOR APPROVED ROOF SYSTEM.
2. A VAPOR RETARDER AT THE DECK LEVEL MAY BE USED IF THERE ARE CONCERNS WITH POTENTIAL MOISTURE ISSUES DUE TO CERTAIN CONSTRUCTION PROCESSES OR OTHER SOURCES DURING BUILDING USE.
3. REFER TO GAF SA PRIMER INSTALLATION INSTRUCTIONS FOR GENERAL GUIDELINES.
4. MAINTAIN SEPARATION BETWEEN VAPOR RETARDER AND MEMBRANE/ ADHESIVE TO AVOID POTENTIAL INCOMPATIBILITY ISSUES.
5. FOR STEEL ROOF DECKS: FILL STEEL DECK FLUTES WITH CLOSED CELL SPRAY FOAM INSULATION PRIOR TO THE INSTALLATION OF ABOVE DECK INSULATION A MINIMUM OF 12 INCHES (305 mm) FROM FACE OF WALL.
6. AIR SEAL WALL-TO-ROOF DECK INTERFACE.

<b>GAF</b>	<b>BASE WALL TERMINATION WITH SA VAPOR RETARDER DETAIL AT WALL</b>			<b>LEGEND</b>	
	DRAWING # <b>309</b>	THIS DETAIL APPLIES TO: ADHERED SYSTEMS MECHANICALLY ATTACHED SYSTEMS RHINO-BOND® SYSTEMS	ISSUE / REVISION DATE <b>7/28/2023</b>	SCALE <b>N.T.S.</b>	 HEAT-WELDED  EVERGUARD® WATER BLOCK  EVERGUARD® BONDING ADHESIVE  CLOSED CELL FOAM INSULATION