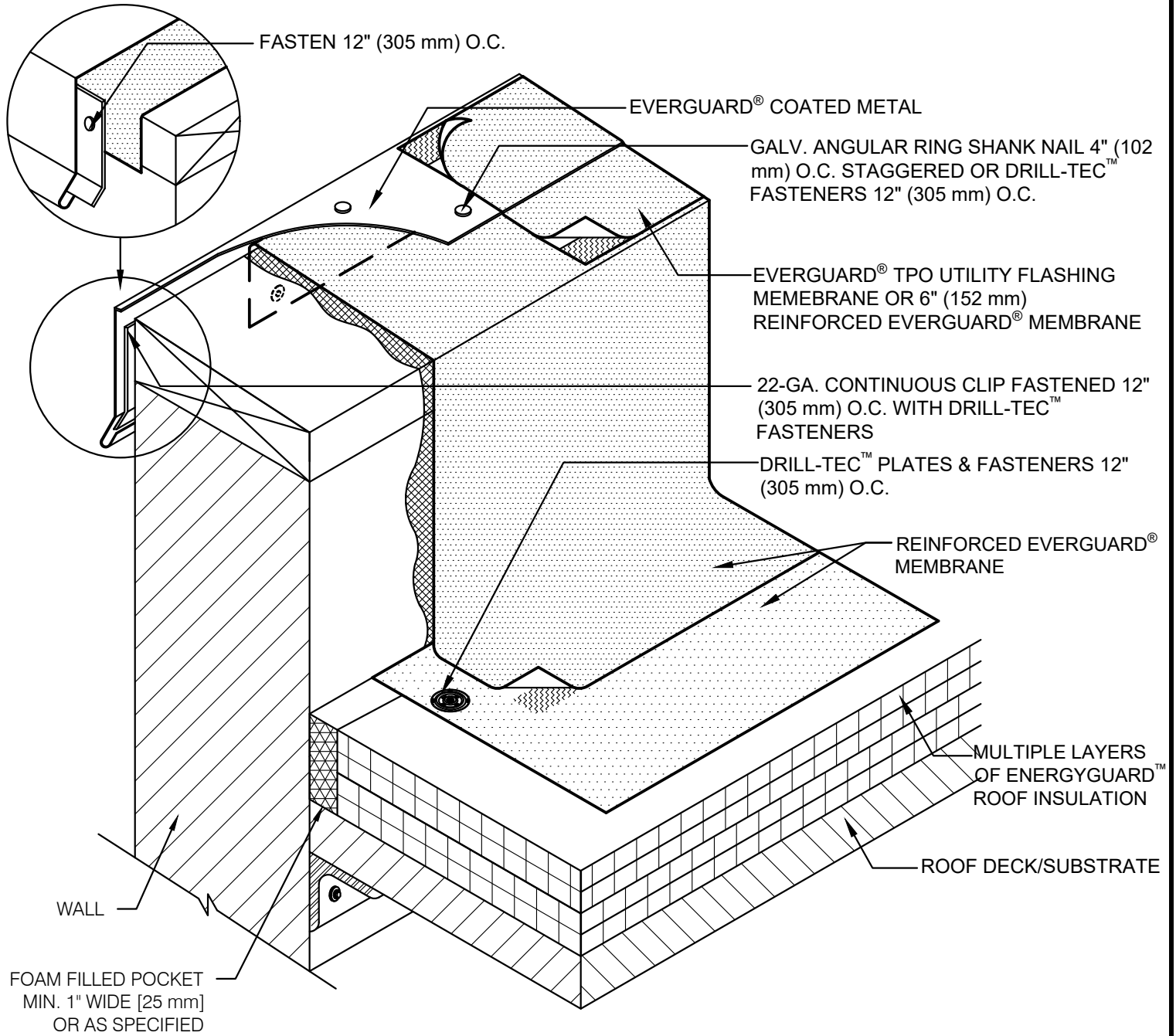


SINGLE-PLY: TPO & PVC 60-80 mil membranes



**NOTE:**

1. COATED METAL EDGE SHOULD BE DESIGNED FOR WIND RESISTANCE IN ACCORDANCE WITH THE APPLICABLE EDITION OF ANCE-7 AND TESTED FOR CAPACITY IN ACCORDANCE WITH THE TEST METHODS IN ANSI/SPRI ES-1.
2. FOR STEEL ROOF DECKS: FILL STEEL DECK FLUTES WITH CLOSED CELL SPRAY FOAM INSULATION PRIOR TO THE INSTALLATION OF ABOVE DECK INSULATION A MINIMUM OF 12 INCHES (305 mm) FROM FACE OF WALL

**LEGEND**

- HEAT-WELDED
- EVERGUARD® BONDING ADHESIVE
- FIELD MEMBRANE