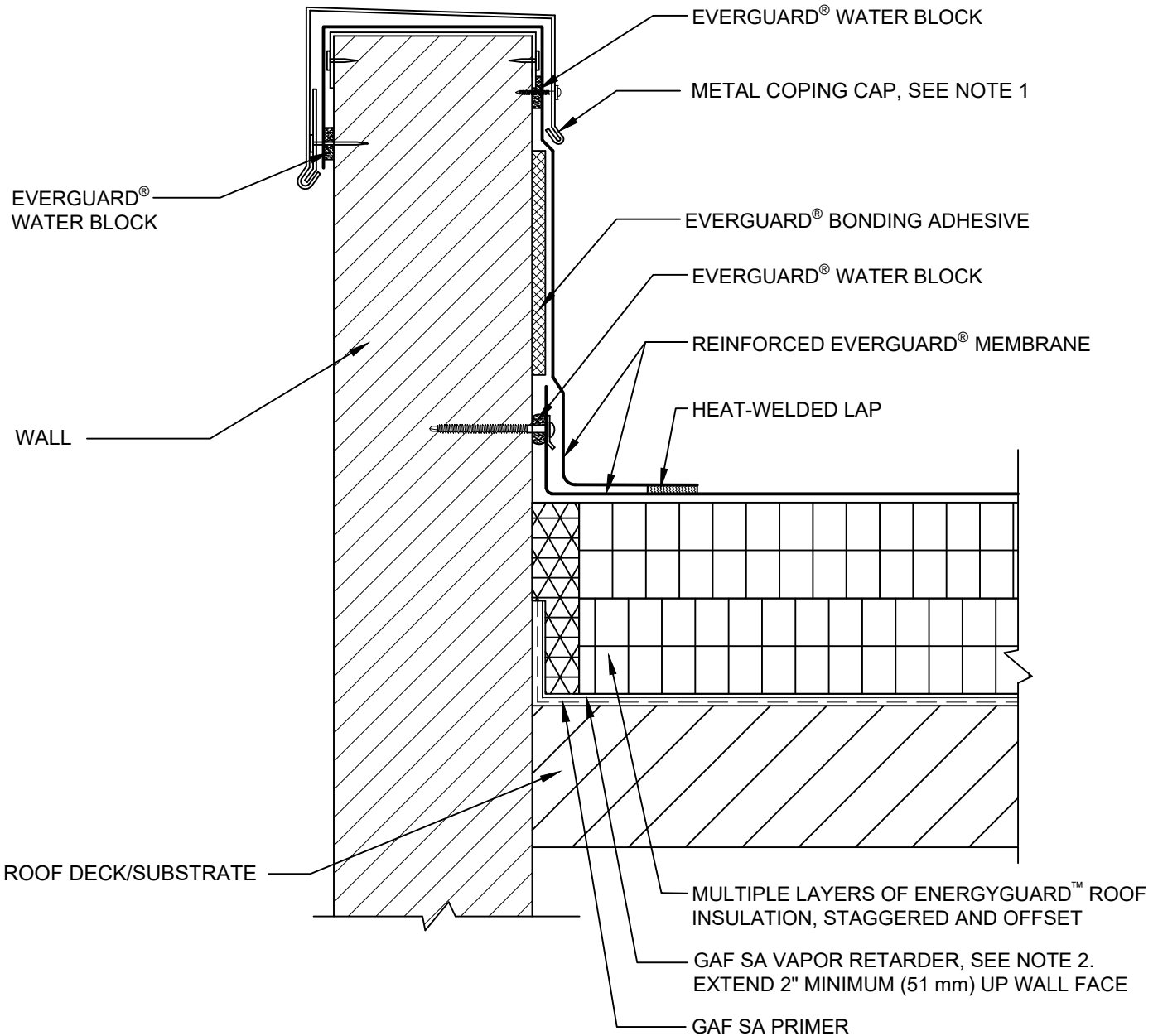


**SINGLE-PLY: TPO & PVC 60-80 mil membranes**



**NOTE:**

1. METAL COPING CAP SHOULD BE DESIGNED FOR WIND RESISTANCE IN ACCORDANCE WITH THE APPLICABLE EDITION OF ASCE 7 AND TESTED FOR CAPACITY IN ACCORDANCE WITH THE TEST METHODS IN ANSI/SPRI ES-1.
2. A VAPOR RETARDER AT THE DECK LEVEL MAY BE USED IF THERE ARE CONCERNS WITH POTENTIAL MOISTURE ISSUES DUE TO CERTAIN CONSTRUCTION PROCESSES OR OTHER SOURCES DURING BUILDING USE.
3. REFER TO GAF SA PRIMER INSTALLATION INSTRUCTIONS FOR GENERAL GUIDELINES.
4. A MINIMUM 1/2 INCH THICK GLASS-MAT-FACED OR FIBER-REINFORCED GYPSUM BOARD IS REQUIRED OVER STEEL DECKS.
5. MAINTAIN SEPARATION BETWEEN VAPOR RETARDER AND MEMBRANE/ ADHESIVE TO AVOID POTENTIAL INCOMPATIBILITY ISSUES.
6. FOR STEEL ROOF DECKS: FILL STEEL DECK FLUTES WITH SPRAY FOAM INSULATION PRIOR TO THE INSTALLATION OF ABOVE DECK INSULATION A MINIMUM OF 12 INCHES (305 mm) FROM FACE OF WALL, BOTH SIDES OF WALL.
7. AIR SEAL WALL-TO-ROOF DECK INTERFACE.



**INSULATED METAL PANEL WALL WITH COPING CAP AND SA VAPOR RETARDER**

DRAWING #  
**303C**

THIS DETAIL APPLIES TO:  
ADHERED SYSTEMS  
MECHANICALLY ATTACHED SYSTEMS  
RHINO BOND® SYSTEMS

ISSUE / REVISION DATE  
**4/6/21**

SCALE  
N.T.S.

**LEGEND**

-  HEAT-WELDED
-  EVERGUARD® WATER-BLOCK
-  EVERGUARD® BONDING ADHESIVE