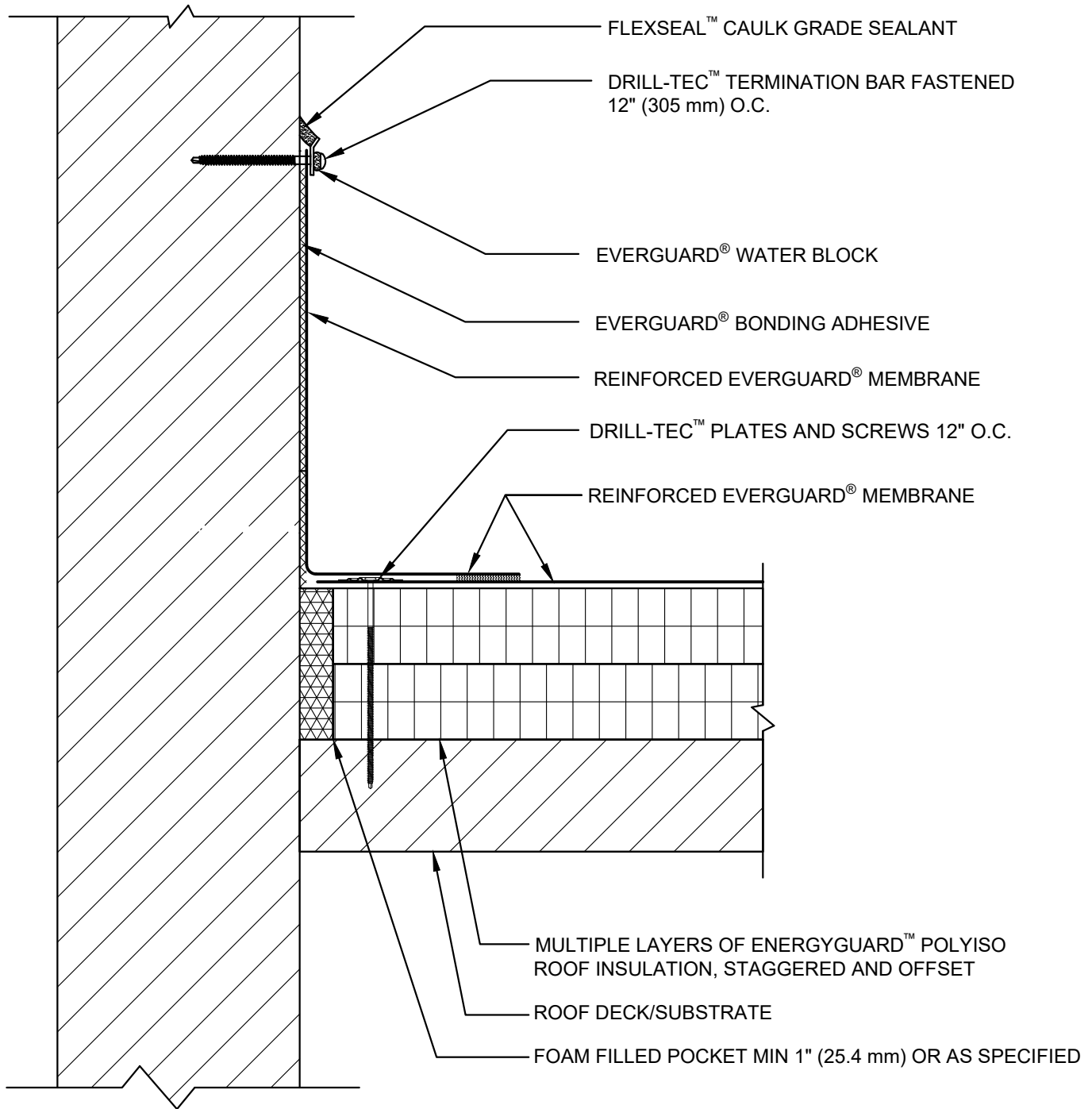


SINGLE-PLY: TPO & PVC 45-80 mil membranes



**NOTE:**

1. EXPOSED WALLS/CURBS MUST BE WATERPROOFED AND MAINTAINED ABOVE THE BASE FLASHING IN ORDER FOR ANY SURFACE-MOUNTED TERMINATION TO BE EFFECTIVE.
2. FOR STEEL ROOF DECKS: FILL STEEL DECK FLUTES WITH CLOSED CELL SPRAY FOAM INSULATION PRIOR TO THE INSTALLATION OF ABOVE DECK INSULATION A MINIMUM OF 12 INCHES (305 mm) FROM FACE OF WALL.



**WALL/CURB FLASHING WITH TERMINATION BAR DETAIL**

DRAWING #  
**302B**

THIS DETAIL APPLIES TO:  
ADHERED SYSTEMS  
MECHANICALLY ATTACHED SYSTEMS  
RHINO-BOND® SYSTEMS

ISSUE / REVISION DATE  
**7/28/2023**

SCALE  
N.T.S.

**LEGEND**

- HEAT-WELDED
- EVERGUARD® WATER BLOCK
- EVERGUARD® BONDING ADHESIVE
- CLOSED CELL FOAM INSULATION