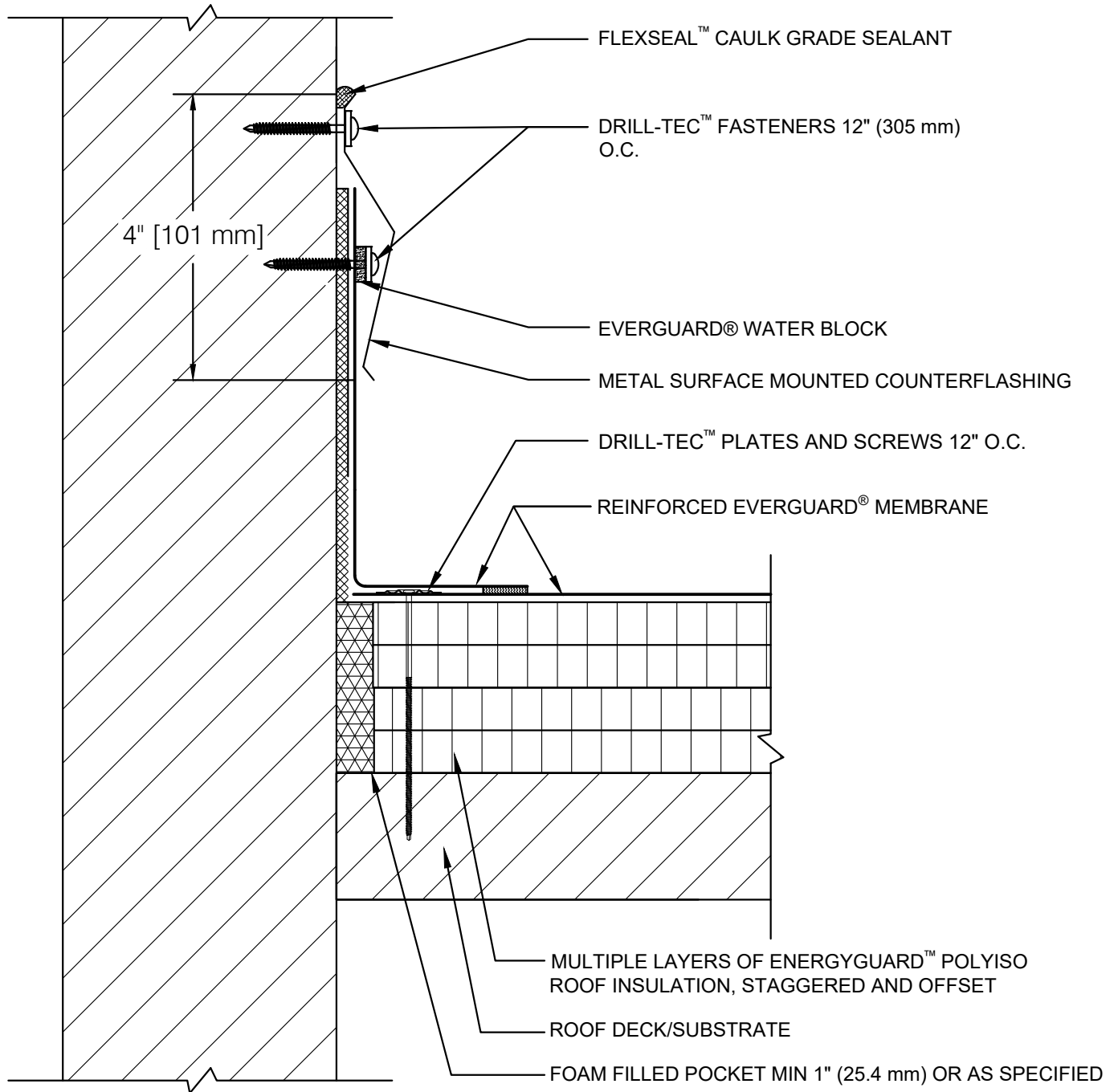


SINGLE-PLY: TPO & PVC 45-80 mil membranes



NOTE:

1. EXPOSED WALLS/CURBS MUST BE WATERPROOFED AND MAINTAINED ABOVE THE BASE FLASHING IN ORDER FOR ANY SURFACE-MOUNTED TERMINATION TO BE EFFECTIVE.
2. FOR STEEL ROOF DECKS: FILL STEEL DECK FLUTES WITH CLOSED CELL SPRAY FOAM INSULATION PRIOR TO THE INSTALLATION OF ABOVE DECK INSULATION A MINIMUM OF 12 INCHES (305 mm) FROM FACE OF WALL.



WALL FLASHING WITH COUNTERFLASHING: SURFACE MOUNT





DRAWING #
301B

THIS DETAIL APPLIES TO:
ADHERED SYSTEMS
MECHANICALLY ATTACHED SYSTEMS
RHINO-BOND® SYSTEMS

ISSUE / REVISION DATE
7/28/2023

SCALE
N.T.S.

LEGEND

-  HEAT-WELDED
-  EVERGUARD® BONDING ADHESIVE
-OPTIONAL UP TO 30" (762 mm) FLASHING HEIGHT
-  CLOSED CELL FOAM INSULATION
-  EVERGUARD® WATER BLOCK