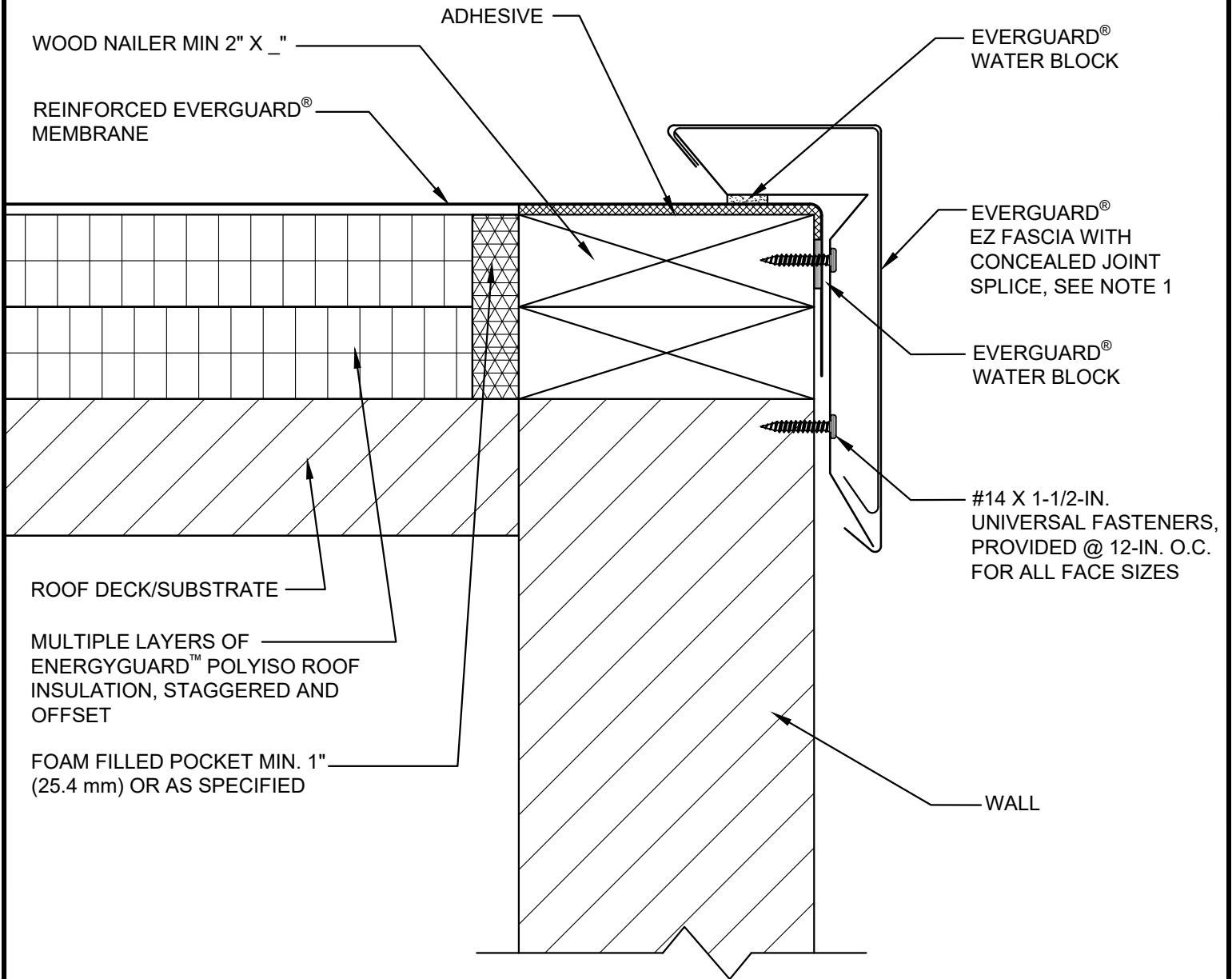





SINGLE-PLY: TPO & PVC 45-80 mil membranes



NOTE:

1. EZ FASCIA SHOULD BE DESIGNED FOR WIND RESISTANCE IN ACCORDANCE WITH THE APPLICABLE EDITION OF ASCE 7 AND TESTED FOR CAPACITY IN ACCORDANCE WITH THE TEST METHODS IN ANSI/SPRI ES-1.
2. FOR STEEL ROOF DECKS: FILL STEEL DECK FLUTES WITH CLOSED CELL SPRAY FOAM INSULATION PRIOR TO THE INSTALLATION OF ABOVE DECK INSULATION A MINIMUM OF 12 INCHES (305 mm) FROM FACE OF WALL.

| | | | | | |
|------------|--------------------------|--|---|-----------------|--|
| GAF | EZ FASCIA DETAIL | | | LEGEND | |
| | DRAWING # 232E | THIS DETAIL APPLIES TO: ADHERED SYSTEMS MECHANICALLY ATTACHED SYSTEMS RHINO-BOND® SYSTEMS | ISSUE / REVISION DATE 7/28/2023 | SCALE N.T.S. |  EVERGUARD® WATER BLOCK  EVERGUARD® BONDING ADHESIVE  CLOSED CELL FOAM INSULATION |