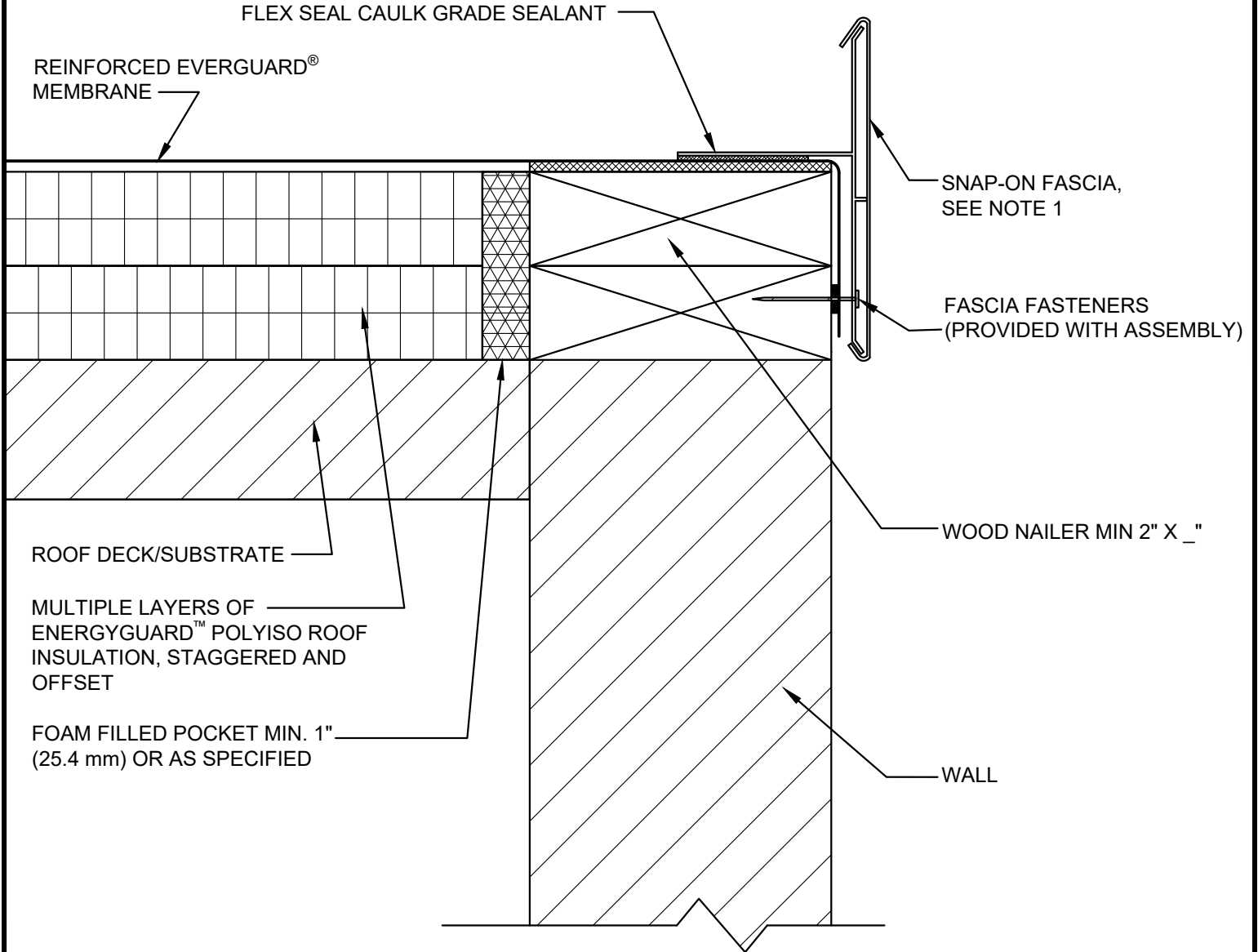


SINGLE-PLY: TPO & PVC 45-80 mil membranes



NOTE:

1. SNAP-ON FASCIA SHOULD BE DESIGNED FOR WIND RESISTANCE IN ACCORDANCE WITH THE APPLICABLE EDITION OF ASCE 7 AND TESTED FOR CAPACITY IN ACCORDANCE WITH THE TEST METHODS IN THE APPLICABLE EDITION OF ANSI/SPRI ES-1.
2. FOR STEEL ROOF DECKS: FILL STEEL DECK FLUTES WITH CLOSED CELL SPRAY FOAM INSULATION PRIOR TO THE INSTALLATION OF ABOVE DECK INSULATION A MINIMUM OF 12 INCHES (305 mm) FROM FACE OF WALL.



SNAP ON FASCIA DETAIL





DRAWING #
205

THIS DETAIL APPLIES TO:
ADHERED SYSTEMS
MECHANICALLY ATTACHED SYSTEMS
RHINOBOND® SYSTEMS

ISSUE / REVISION DATE
7/28/2023

SCALE
N.T.S.

LEGEND

-  HEAT-WELDED
-  EVERGUARD® WATER BLOCK
-  EVERGUARD® BONDING ADHESIVE
-  CLOSED CELL FOAM INSULATION