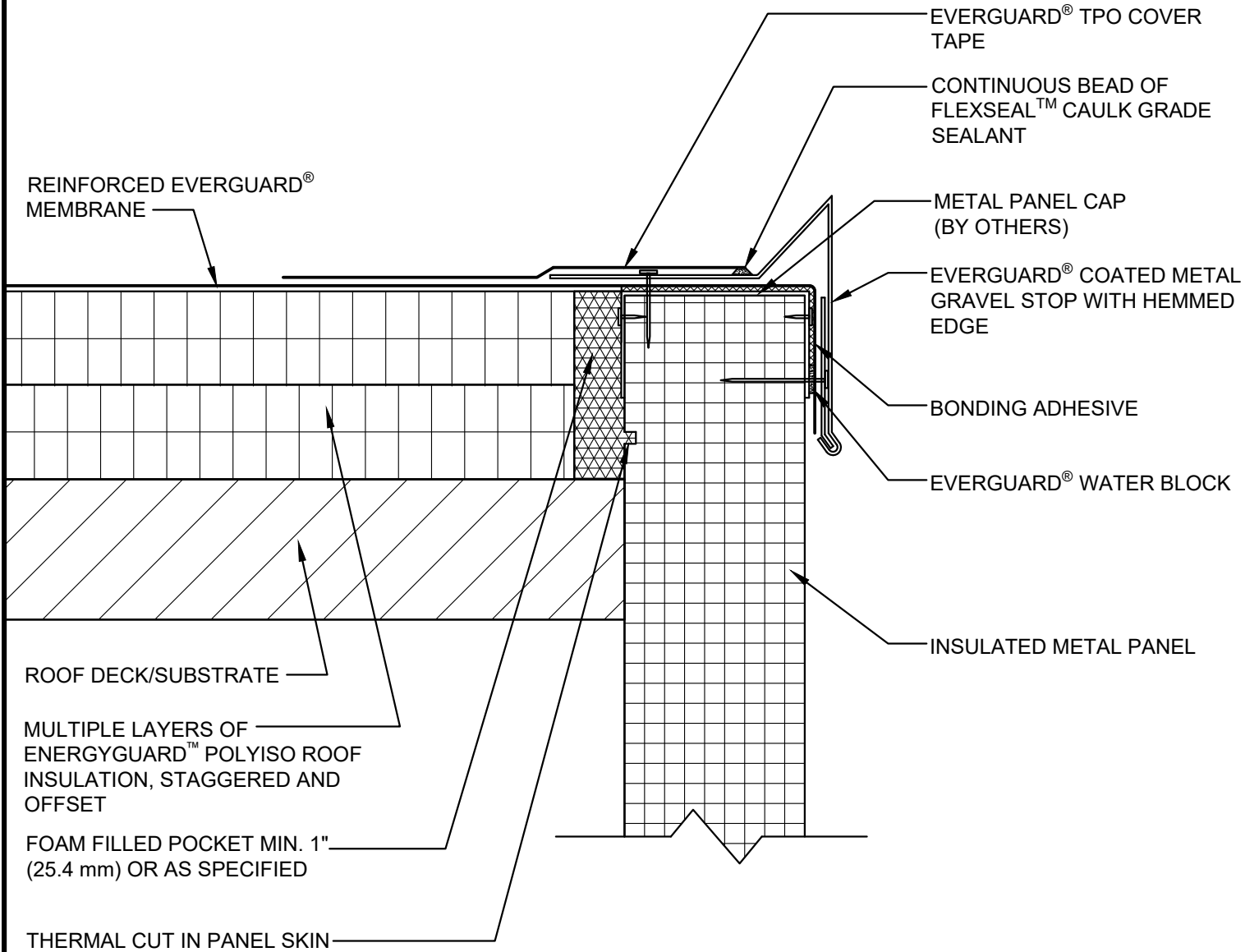


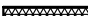


SINGLE-PLY: TPO & PVC 45-80 mil membranes



NOTE:

1. CLEAN METAL AND MEMBRANE WITH EVERGUARD® TPO SEAM CLEANER AND ALLOW TO DRY. ONCE DRY, PRIME METAL AND MEMBRANE WITH EVERGUARD® TPO PRIMER BEFORE INSTALLING EVERGUARD® TPO COVER TAPE.
2. THE ATTACHMENT CAPACITY OF THE INSULATED METAL PANELS SHOULD BE VERIFIED.
3. FOR STEEL ROOF DECKS: FILL STEEL DECK FLUTES WITH CLOSED CELL SPRAY FOAM INSULATION PRIOR TO THE INSTALLATION OF ABOVE DECK INSULATION A MINIMUM OF 12 INCHES (305 mm) FROM FACE OF WALL.

GAF	METAL GRAVEL STOP WITH HEMMED EDGE AT INSULATED METAL PANEL			LEGEND	
	DRAWING # 202E	THIS DETAIL APPLIES TO: ADHERED SYSTEMS MECHANICALLY ATTACHED SYSTEMS RHINO BOND® SYSTEMS	ISSUE / REVISION DATE 7/28/2023	SCALE N.T.S.	 HEAT-WELDED  EVERGUARD® WATER BLOCK  CLOSED CELL FOAM INSULATION