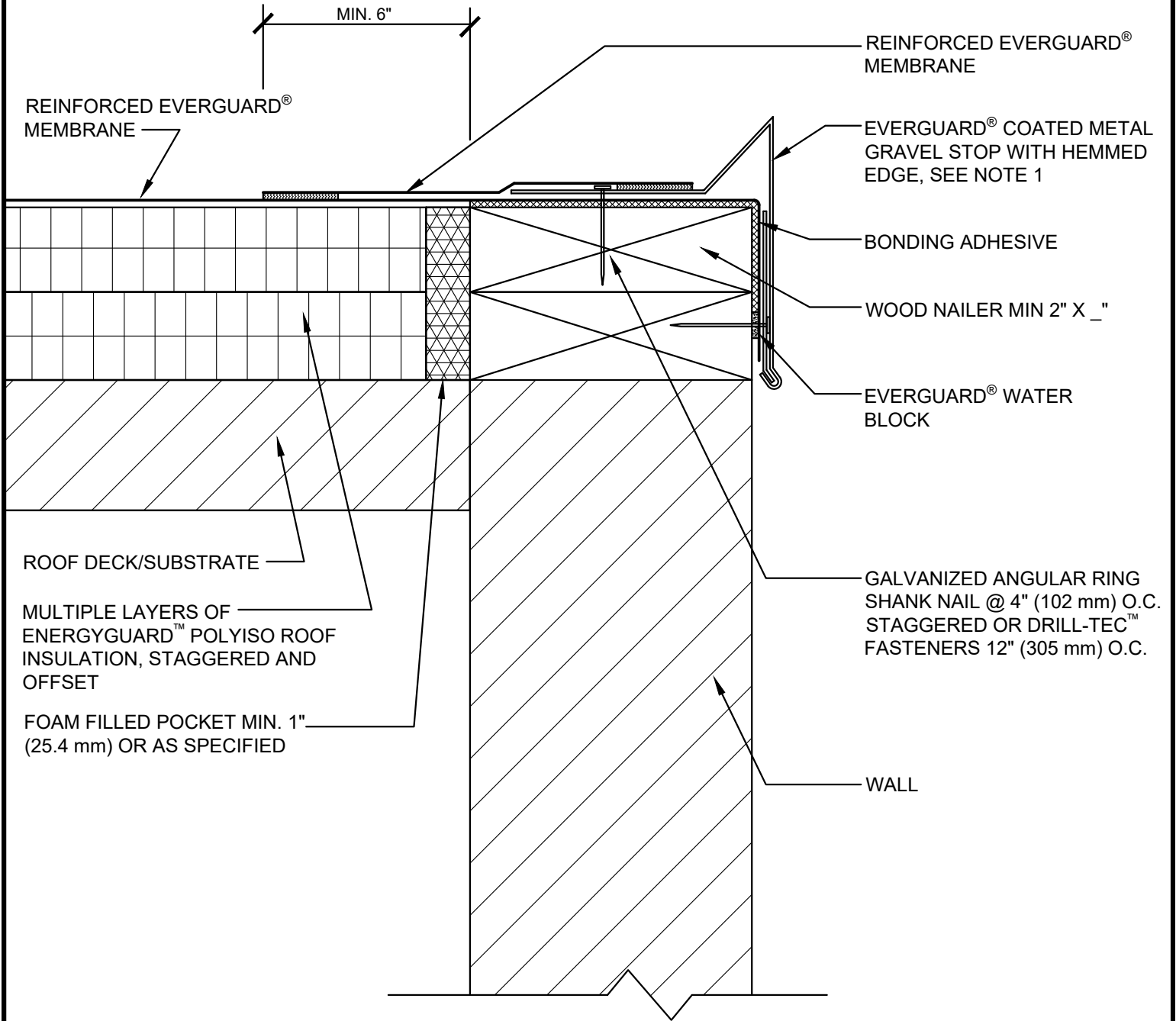


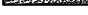


SINGLE-PLY: TPO & PVC 45-80 mil membranes



NOTE:

- METAL GRAVEL STOP SHOULD BE DESIGNED FOR WIND RESISTANCE IN ACCORDANCE WITH THE APPLICABLE EDITION OF ASCE 7 AND TESTED FOR CAPACITY IN ACCORDANCE WITH THE TEST METHODS IN THE APPLICABLE EDITION OF ANSI/SPRI ES-1.
- FOR STEEL ROOF DECKS: FILL STEEL DECK FLUTES WITH CLOSED CELL SPRAY FOAM INSULATION PRIOR TO THE INSTALLATION OF ABOVE DECK INSULATION A MINIMUM OF 12 INCHES (305 mm) FROM FACE OF WALL.
- AIR SEAL WALL-TO-ROOF DECK INTERFACE.

GAF	COATED METAL GRAVEL STOP AT ROOF EDGE			LEGEND	
	DRAWING # 202B	THIS DETAIL APPLIES TO: ADHERED SYSTEMS MECHANICALLY ATTACHED SYSTEMS RHINO-BOND® SYSTEMS	ISSUE / REVISION DATE 7/28/2023	SCALE N.T.S.	 HEAT-WELDED  EVERGUARD® WATER BLOCK  CLOSED CELL FOAM INSULATION