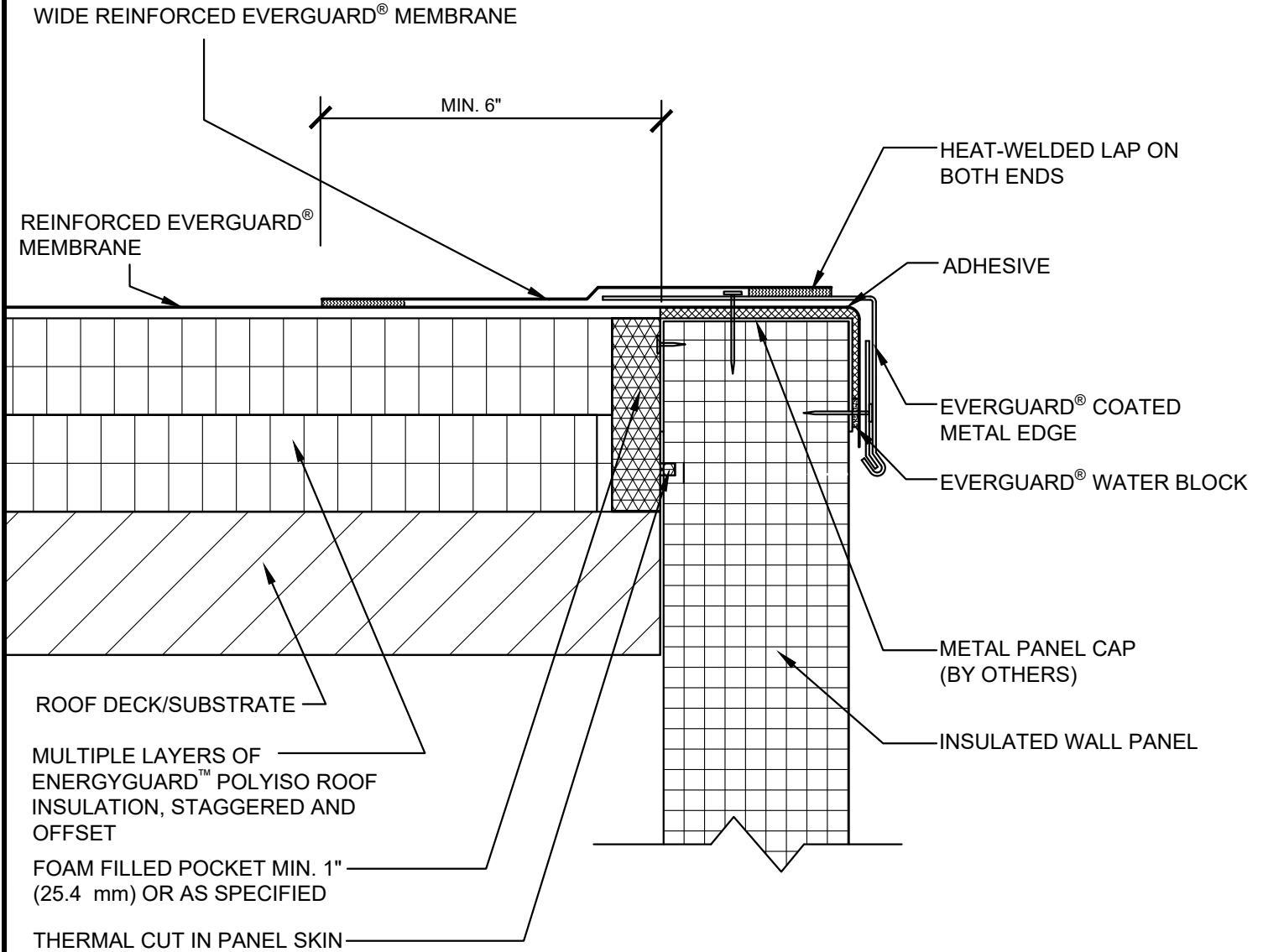


SINGLE-PLY: TPO & PVC 45-80 mil membranes



NOTE:

1. THE ATTACHMENT CAPACITY OF THE INSULATED METAL PANELS SHOULD BE VERIFIED.
2. FOR STEEL ROOF DECKS: FILL STEEL DECK FLUTES WITH CLOSED CELL SPRAY FOAM INSULATION PRIOR TO THE INSTALLATION OF ABOVE DECK INSULATION A MINIMUM OF 12 INCHES (305 mm) FROM FACE OF WALL.



COATED METAL ROOF EDGE AT INSULATED WALL PANEL

DRAWING #
201C

THIS DETAIL APPLIES TO:
ADHERED SYSTEMS
MECHANICALLY ATTACHED SYSTEMS
RHINO-BOND® SYSTEMS

ISSUE / REVISION DATE
7/28/2023

SCALE
N.T.S.

LEGEND

- HEAT-WELDED
- EVERGUARD® WATER BLOCK
- EVERGUARD® BONDING ADHESIVE
- CLOSED CELL FOAM INSULATION