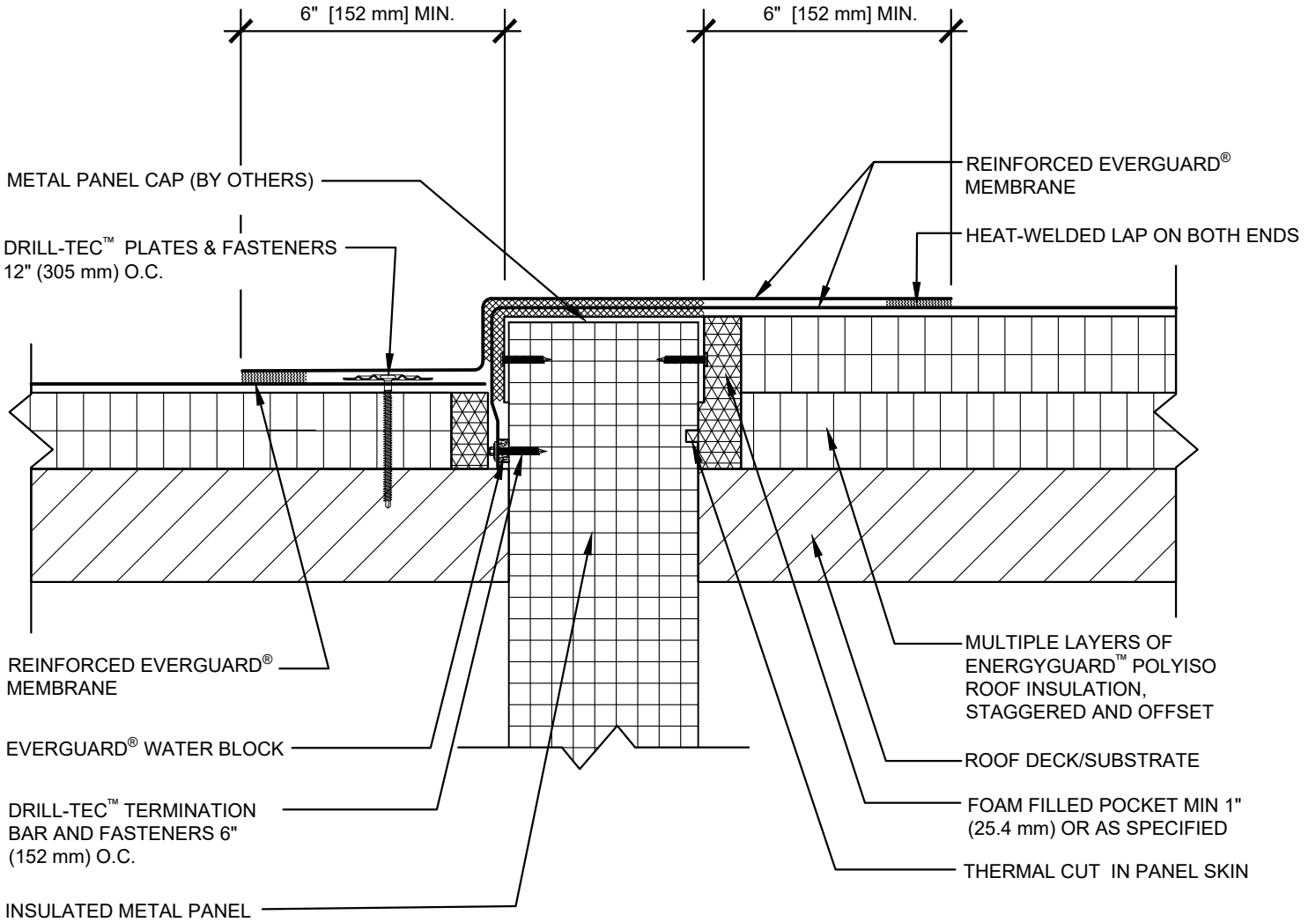


SINGLE-PLY: TPO & PVC 60-80 mil membranes



WARM

COLD

NOTE:

1. FOR STEEL ROOF DECKS: FILL STEEL DECK FLUTES WITH CLOSED CELL SPRAY FOAM INSULATION PRIOR TO THE INSTALLATION OF ABOVE DECK INSULATION A MINIMUM OF 12 INCHES (305 mm) FROM FACE OF WALL, BOTH SIDES OF WALL.
2. AIR SEAL WALL-TO-ROOF DECK INTERFACE.



**COLD TO WARM TRANSITION TIE-IN WITH INSULATED METAL PANEL
ABOVE ROOF DECK - OFFSET IN ROOF LEVELS DETAIL**

DRAWING #
130D

THIS DETAIL APPLIES TO:
ADHERED SYSTEMS
MECHANICALLY ATTACHED SYSTEMS
RHINOBOND® SYSTEMS

ISSUE / REVISION DATE
7/28/2023

SCALE
N.T.S.

LEGEND

- HEAT-WELDED
- EVERGUARD® WATER BLOCK
- EVERGUARD® BONDING ADHESIVE
- CLOSED CELL FOAM INSULATION