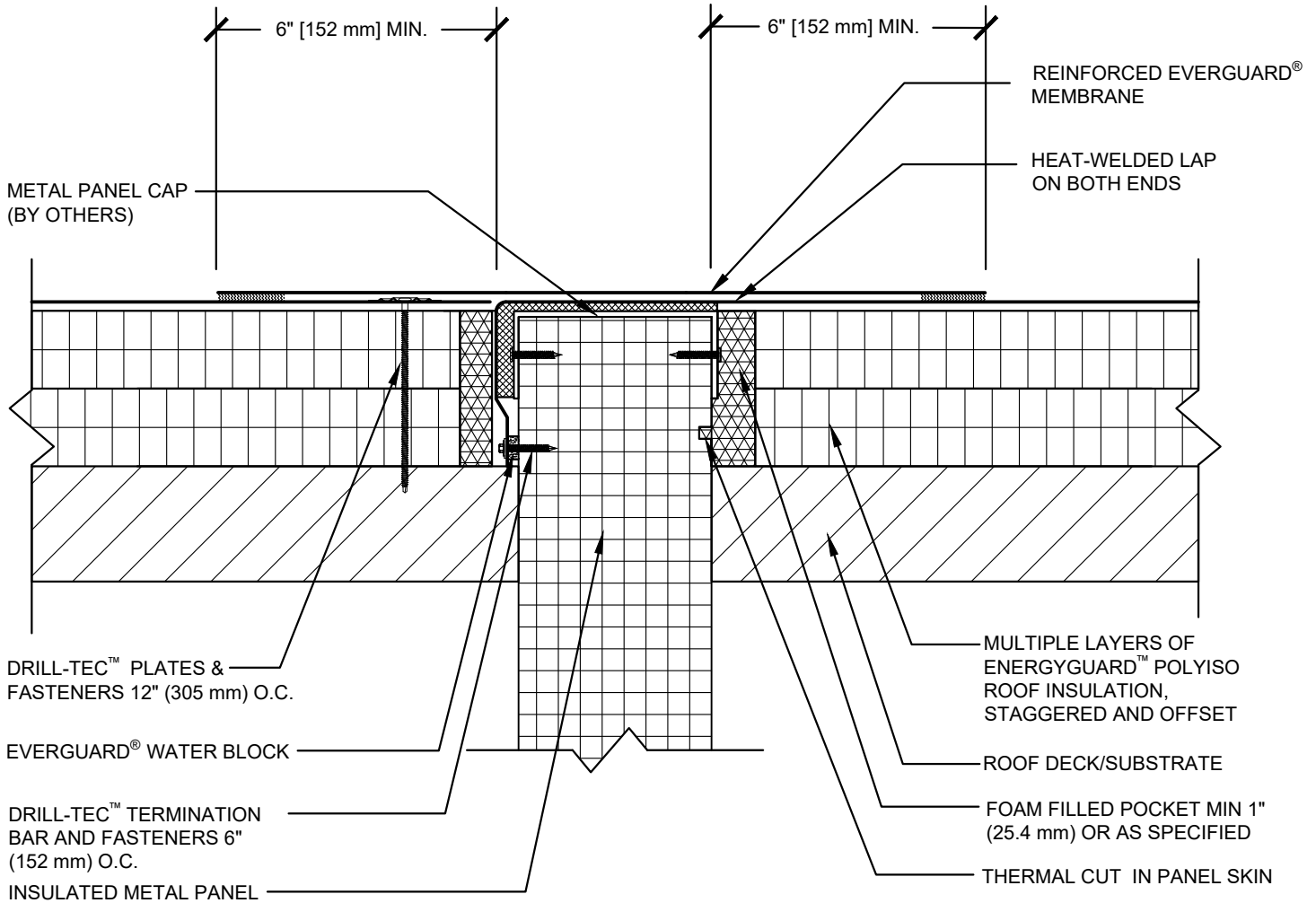


SINGLE-PLY: TPO & PVC 45-80 mil membranes



**WARM**

**COLD**

**NOTE:**

1. FOR STEEL ROOF DECKS: FILL STEEL DECK FLUTES WITH CLOSED CELL SPRAY FOAM ROLL OUT INSULATION PRIOR TO THE INSTALLATION OF ABOVE DECK INSULATION A MINIMUM OF 12 INCHES (305 mm) FROM FACE OF WALL, BOTH SIDES OF WALL.
2. AIR SEAL WALL-TO-ROOF DECK INTERFACE.



**COLD TO WARM TRANSITION TIE-IN WITH INSULATED METAL PANEL ABOVE ROOF DECK**

DRAWING #  
**130B**

THIS DETAIL APPLIES TO:  
ADHERED SYSTEMS  
MECHANICALLY ATTACHED SYSTEMS  
RHINOBOND® SYSTEMS

ISSUE / REVISION DATE  
**7/28/2023**

SCALE  
N.T.S.

**LEGEND**

- HEAT-WELDED
- EVERGUARD® WATER BLOCK
- EVERGUARD® BONDING ADHESIVE
- CLOSED CELL FOAM INSULATION