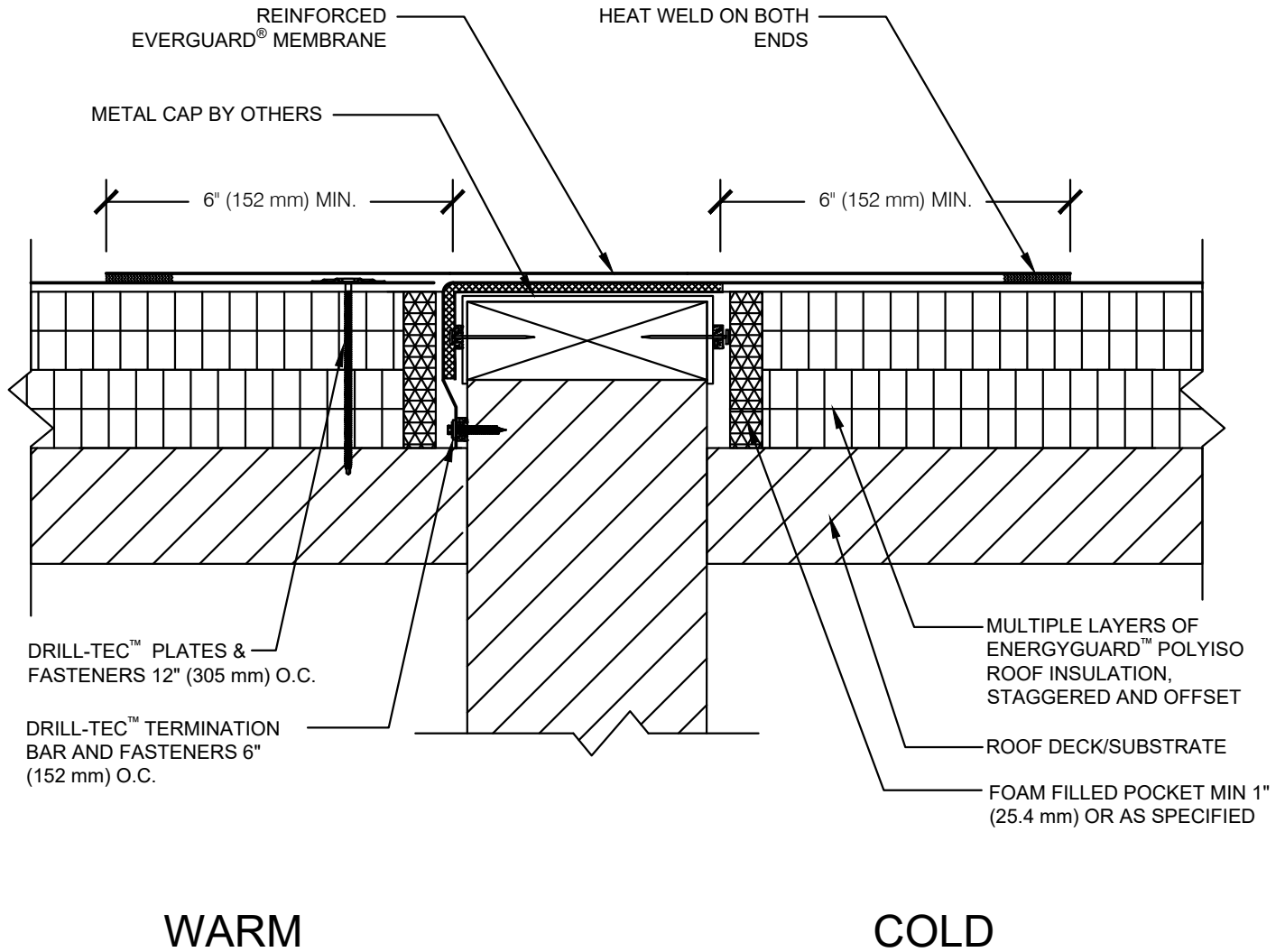


SINGLE-PLY: TPO & PVC 60-80 mil membranes



NOTE:

1. FOR STEEL ROOF DECKS: FILL STEEL DECK FLUTES WITH CLOSED CELL SPRAY FOAM INSULATION PRIOR TO THE INSTALLATION OF ABOVE DECK INSULATION A MINIMUM OF 12 INCHES (305 mm) FROM FACE OF WALL ON EACH SIDE, BOTH SIDES OF WALL.



COLD TO WARM TRANSITION TIE-IN





DRAWING #
130A

THIS DETAIL APPLIES TO:
ADHERED SYSTEMS
MECHANICALLY ATTACHED SYSTEMS
RHINO-BOND® SYSTEMS

ISSUE / REVISION DATE
7/28/2023

SCALE
N.T.S.

LEGEND

-  HEAT-WELDED
-  EVERGUARD® WATER BLOCK
-  EVERGUARD® BONDING ADHESIVE
-  CLOSED CELL FOAM INSULATION